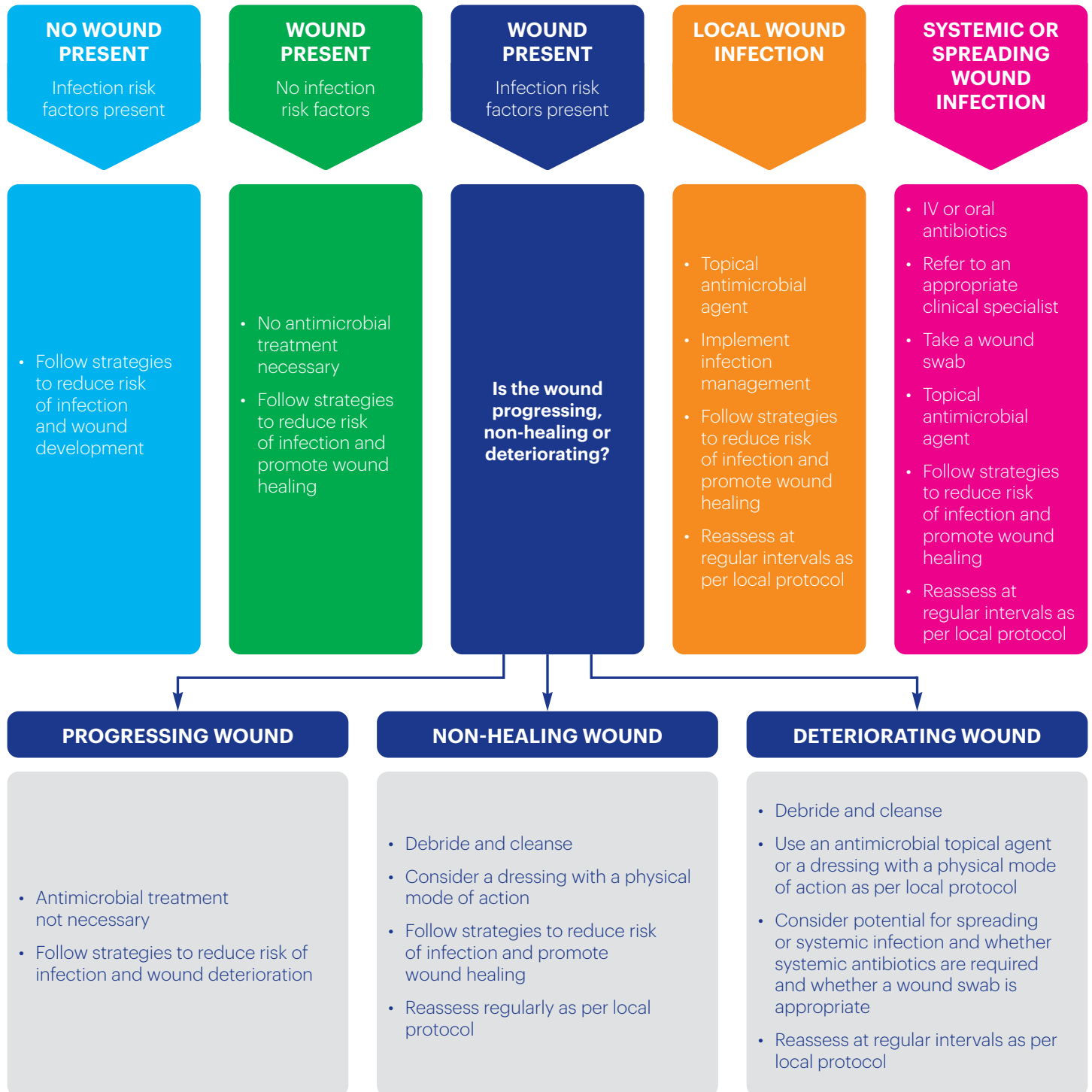


Animal Wound Infection Guideline

Treatment Selection

Assess the patient and their comorbidities, wound(s), skin and environment to identify factors that may impact on infection. Comprehensive reassessment and reviews will guide if changes to the management plan are required



© Adapted from: Wounds UK (2020) Best Practice Statement: Antimicrobial stewardship strategies for wound management. Wounds UK, London. With permission of Wounds UK.

*Factors associated with increased risk of wound infection include diabetes, emergency procedures, severe obesity, altered immune function, malnutrition, low body temperature, and long operation times

T.I.M.E.S & Product Selection

Complete a holistic assessment using the T.I.M.E.S framework

The flow chart below can support with product selection

Document your wound healing aims and objectives, with a clear period for review

IF THERE IS	OBSERVATIONS	TREATMENT OBJECTIVES	DRESSING / TREATMENT OPTIONS	SUGGESTED ESSITY DRESSING
T = Tissue	Consider if non-viable or viable tissue is present	Consider the removal of non-viable tissue by debridement to aid wound progression	Options include: Autolytic, mechanical, sharp, surgical or enzymatic	<p>Cutimed® Gel - a hydrogel that adapts to the wound bed and donates moisture to support with autolytic debridement</p> <p>Cutimed® Sorbact® Gel - a non-absorbent bacteria and fungi binding wound dressing, based on Sorbact Technology. Cutimed Sorbact Gel's high moisture-donation capacity, facilitates autolytic debridement</p> <p>Cutimed® Debriclean - a mechanical debridement pad which consists of two sorts of looped fibres, soft monofilament fibres for gentle abrasion that protect intact tissue and abrasive fibres to break up and remove firm slough, microorganisms and biofilm</p>
I = Inflammation or Infection	Assess for signs of local / systemic or spreading wound infection	If signs of infection are present, reduce bacterial load	See the animal wound infection guideline	<p>Cutimed® Sorbact® - Is intended for use in the management of clean, contaminated, colonised or infected exudating wounds, such as surgical and traumatic wounds. Sorbact® Technology dressings reduce bioburden and support effective wound healing, with low risk of allergies</p>
M = Moisture	Establish level of wound exudate	Aim for a balanced and optimal moist wound healing environment	Select the appropriate dressing suitable for the level of exudate	<p>Cutimed® Siltec® Sorbact® - A sterile, bacteria and fungi binding wound dressing, based on Sorbact Technology, with polyurethane foam and a silicone adhesive border</p> <p>Cutimed® Sorbion® Sorbact® - a bacteria and fungi binding wound dressing, based on Sorbact Technology, with a superabsorbent core that absorbs and retains excessive exudate levels</p> <p>Cutimed® Sorbact® Hydroactive - A highly absorbent hydropolymer matrix with Sorbact Technology, covered by a semipermeable polyurethane film. Bordered and non border variants available</p>
E = Edges	Assess the edge of the wound, see whether a wound is progressing	The edges should be contracting	Barrier preparations (e.g. barrier creams, ointments or films)	<p>Cutimed® PROTECT - spray, foam applicator or cream which provide a long-lasting protective barrier against damage and irritation</p>
S = Surrounding Skin	Assess the condition of the surrounding skin	Managing the surrounding skin will support the wound healing process		