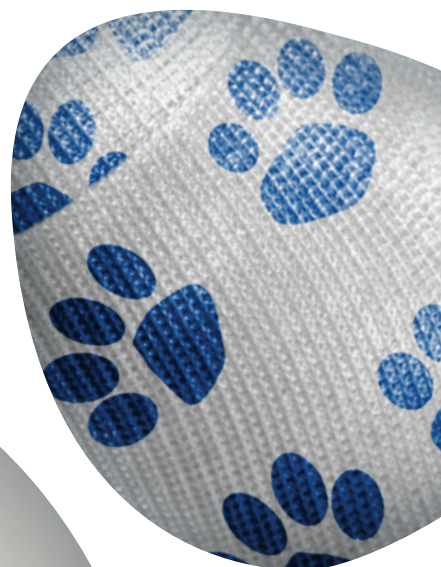


Fracture Management

Product Brochure



Delta-Cast®



About Essity

Essity is a leading global hygiene and health company. We are dedicated to improving well-being through our products and services. Sales are conducted in approximately 150 countries under the leading global brands TENA and Tork, and other strong brands, such as Actimove, Delta-Cast, JOBST, Knix, Leukoplast, Libero, Libresse, Lotus, Modibodi, Nosotras, Saba, Tempo, TOM Organic, Vinda and Zewa. Essity breaks barriers to well-being and contributes to a healthy, sustainable and circular society. More information at www.essity.com.

For more product information and advice please contact our Customer Service team who are always ready to answer your queries or take order details by telephone **0845 1223600**, or by email orders.uk@essity.com

Support

When faced with orthopaedic trauma, optimal care for optimal healing is required. So, when it comes to broken bones or injured ligaments, Delta-Cast is your trusted partner.

As the global market leader in casting with a strong brand heritage in fracture management, Delta-Cast has a comprehensive and innovative portfolio that you can rely on.

Delta-Cast takes pride in going the extra mile to support you through service and training so that you have the knowledge and tools to overcome any casting challenge that comes your way.

Delta-Cast – We know casting.



Education

Our commitment to professional education is illustrated with our Essity PATH educational platform. It underpins our belief that progress in patient care depends on continuing professional development and our educational initiatives are an integral part of our relationship with clinicians.

PATH is a gold standard education platform with a diverse selection of therapy areas and learning styles, to help you provide the best possible patient care.



**Professional Accredited Training
for Healthcare Professionals**

You choose the educational journey that suits you

Therapy Areas

Select from the following:

- Continence Care
- Lower Limb Management
- Lymphoedema Care
- Wound Management
- Orthopaedics
- Animal Healthcare

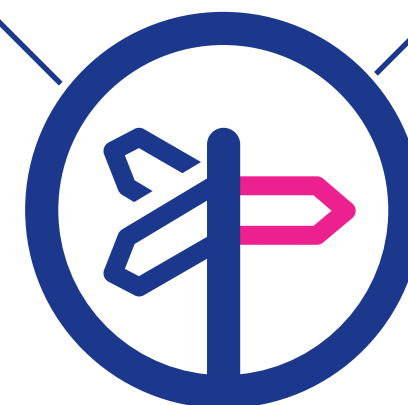
Topics

Then choose...

...from the available topics within each therapy area and the different learning styles

Learning Styles

- e-Learning
- Webcast
- Bitesize Learning
- Masterclasses and Events



To find out more please contact your local Account Manager or contact us on:
Tel: **01482 670177** Email: concierge.service@essity.com

Contents

Casting Tapes and Splinting

Plaster of Paris	
Gypsona®	6
Specialist® E	6
Biplatrix®	7
Non-Fibreglass Casting Tape	
Delta-Cast® Conformable	8
Delta-Cast® Elite	9
Delta-Cast® Prints	10
Fibreglass Casting Tape	
Delta-Lite® Plus	11
Flexible Casting Tape	
Delta-Cast® Soft	12
Synthetic Splinting	
Dynacast® Prelude	13
Dynacast® Prelude Solo	13
Dynacast® Prelude Strap Kits	14
Dynacast® AS Ankle Splint	14
Alternative Splinting	
Delta-Xpress®	15

Undercast Padding

Padding	
Soffban® Natural	18
Velband®	18
Soffban® Synthetic	19
Delta-Rol® Synthetic	19
Delta-Rol® 'S' Synthetic	20
Water Resistant Cast Padding	
Delta-Dry®	20
Delta-Dry® Pantaloon	21

Stockinette

Natural	
Jersey Standard	23
Delta Terry-Net® C	23
Synthetic	
Delta-Net® Stockinette	24
Delta Terry-Net® S	24
Delta Terry-Net® Thumb Spica	24
Water Resistant Stockinette	
Delta-Dry® Stockinette	25
Delta-Dry® Softliner	25

Thermoplastics

Thermoplastics	
Delta Thermo®	27

Casting Accessories

Accessories	
Tensoban® Pre-Tape Underwrap	29
Tensoplast® Sport Cast Edge Tape	29
Delta Terry-Net® Adhesive Felt Liner	30
Delta Terry-Net® Cloth and Foam Liner	30
Delta Terry-Net® Adhesive Fleece Edger	31
Delta Terry-Net® Adhesive Hook and Stretch Loop Fabric	31
Cast Shoes	
Solo® Vinyl Cast Shoe	32
Eco Canvas Cast Sandal	32
Artistep Cast Shoe	33
Skin Traction Kits	
Tensoplast® Skin Traction Kits	34
Casting Equipment	
Knee Rest	35



Casting Tapes and Splinting

Setting the industry benchmark in synthetic casting materials, the Delta range rises to the daily challenges of fracture management.

Gypsona, **Specialist E** and **Biplatrix** are our plaster of Paris products that suit all immobilisation needs. All formulations are available in rolls and slabs.

Delta-Lite Plus is a smooth, durable fibreglass casting tape that combines a fibreglass substrate and a polyurethane resin system. **Delta-Cast Conformable**, **Delta Cast Elite**, **Delta Cast Prints** are our non-fibreglass casting tapes, combining strength and rigidity with soft edges for enhance patient comfort. Flexible cast tape **Delta-Cast Soft** provides functional support to fractures and soft tissue injuries.

The **Dynacast Prelude** range and **Delta-Xpress** are ground-breaking splinting systems that allow you to immobilise limbs in a fraction of the time, compared to plaster of Paris slabs.

Plaster of Paris

Gypsona® premium plaster of Paris bandage is made from a specially woven leno weave cloth, uniformly impregnated with high quality, creamy, fast setting plaster of Paris that produces a strong cast with an excellent finish. Available in roll and 5-ply slab format.

Interlocked leno weave gauze

- Provides excellent stability and conformability to the wet bandage
- Minimises plaster loss
- Provides strong finished cast

Smooth, creamy plaster formula

- Allows for a smooth aesthetically pleasing cast
- Improved moulding properties and excellent finish

Nicked bandage edge design

- Ensures minimal fraying and loose threads during application
- Supports a smoother cast finish

Round core

- Improved handling stability

Code	Size	Pack Qty	NHS SC Code
71985-04	5cm x 2.7m roll	1 x 48	EAA051
71985-05	7.5cm x 2.7m roll	1 x 48	EAA052
71985-00	10cm x 2.7m roll	1 x 48	EAA053
71985-02	15cm x 2.7m roll	1 x 24	EAA054
71985-03	20cm x 2.7m roll	1 x 24	EAA055
71988-14	10cm x 20m 5-ply slab dispenser	1 x 1	EAA023
71988-15	15cm x 20m 5-ply slab dispenser	1 x 1	EAA025
71988-16	20cm x 20m 5-ply slab dispenser	1 x 1	EAA027



Plaster of Paris

Specialist® E plaster of Paris has a creamy texture resulting in a smooth feel, and making it easy to apply. It forms a well fitting cast that is reassuringly tough and strong. It is the ideal choice for casting applications where a quick setting time is required. Available in roll and 5-ply slab format.

Smooth, creamy texture

- Results in a smooth, evenly finished cast
- Minimal plaster loss

Highly mouldable and strong

- Produces an excellent fit around difficult body contours and delivers a well laminated cast

Easy to apply and remove

- Able to 'window' the cast after only 10 minutes

Moisture proof packaging

- Protects and prolongs the product shelf life

Code	Size	Pack Qty	NHS SC Code
72260-00	5cm x 2.7m roll	1 x 12	EAA056
72260-01	7.5cm x 2.7m roll	1 x 12	EAA057
72260-02	10cm x 2.7m roll	1 x 12	EAA058
72260-04	15cm x 2.7m roll	1 x 12	EAA049
72260-05	20cm x 2.7m roll	1 x 12	EAA050
72259-00	10cm x 20m 5-ply slab dispenser	1 x 1	EAA007
72259-02	15cm x 20m 5-ply slab dispenser	1 x 1	EAA008
72259-03	20cm x 20m 5-ply slab dispenser	1 x 1	EAA009



Plaster of Paris

Biplatrix® is a very fast setting plaster of Paris bandage that consists of a cotton gauze substrate which is spread with gypsum and spooled on a round core. The bandages wet rapidly and evenly with no dry spots. The initial weight of plaster spread and it's low plaster loss combine to offer a smooth plaster and a durable cast.

Code	Size	Pack Qty	NHS SC Code
71995-24	5cm x 3m roll	1 x 40	EAA015
71995-05	8cm x 3m roll	1 x 40	EAA018
71995-06	10cm x 3m roll	1 x 40	EAA029
71995-09	15cm x 3m roll	1 x 40	EAA030
71995-11	20cm x 3m roll	1 x 20	EAA031
71995-15	10cm x 25m 4-ply slab dispenser	1 x 1	EAA032
71995-16	15cm x 25m 4-ply slab dispenser	1 x 1	EAA033
71995-17	20cm x 25m 4-ply slab dispenser	1 x 1	EAA034

Ultra fast setting time

- Sets within two minutes when activated in water (at maximum 25°C)
- Ideal for orthotic applications

High resistance and durability

- The high mass weight of Biplatrix® combined with low plaster loss provides a durable cast

Strong plaster formula

- Less creamy than other plaster of Paris, Biplatrix® provides a strong rigid plaster

Moisture resistant packaging

- Biplatrix® rolls are dual packed in a clear polythene film

Non-Fibreglass Cast Tape

Delta-Cast® Conformable has set a benchmark in standard and removable, non-fibreglass cast tapes. Delta-Cast® Conformable responds to the daily challenges of fracture management - it's distinctive construction provides rigid and semi-rigid casting options for primary and secondary casting applications where patient fit, comfort and compliance are critical.

Delta-Cast® Conformable is the only UK cast tape with clinical evidence¹ to support it's use for focused rigidity casting.

Code	Size	Colour	Pack Qty	NHS SC Code
72280-00	2.5cm x 1.80m	○ White	1 x 10	EA2659
72280-01	5cm x 3.6m	○ White	1 x 10	EA308
72280-02	7.5cm x 3.6m	○ White	1 x 10	EA401
72280-03	10cm x 3.6m	○ White	1 x 10	EA402
72280-04	12.5cm x 3.6m	○ White	1 x 10	EA403
72281-00	5cm x 3.6m	● Pink	1 x 10	EA495
72281-01	7.5cm x 3.6m	● Pink	1 x 10	EA510
72281-02	10cm x 3.6m	● Pink	1 x 10	EA521
72282-00	5cm x 3.6m	● Dark blue	1 x 10	EA492
72282-01	7.5cm x 3.6m	● Dark blue	1 x 10	EA504
72282-02	10cm x 3.6m	● Dark blue	1 x 10	EA516
72283-00	5cm x 3.6m	● Yellow	1 x 10	EA498
72283-01	7.5cm x 3.6m	● Yellow	1 x 10	EA513
72283-02	10cm x 3.6m	● Yellow	1 x 10	EA525
72284-00	5cm x 3.6m	● Orange	1 x 10	EA494
72284-01	7.5cm x 3.6m	● Orange	1 x 10	EA508
72284-02	10cm x 3.6m	● Orange	1 x 10	EA518
72285-00	5cm x 3.6m	● Red	1 x 10	EA497
72285-01	7.5cm x 3.6m	● Red	1 x 10	EA512
72285-02	10cm x 3.6m	● Red	1 x 10	EA524
72286-00	5cm x 3.6m	● Purple	1 x 10	EA496
72286-01	7.5cm x 3.6m	● Purple	1 x 10	EA511
72286-02	10cm x 3.6m	● Purple	1 x 10	EA523
72287-00	5cm x 3.6m	● Green	1 x 10	EA493
72287-01	7.5cm x 3.6m	● Green	1 x 10	EA506
72287-02	10cm x 3.6m	● Green	1 x 10	EA517
72288-00	5cm x 3.6m	● Black	1 x 10	EA491
72288-01	7.5cm x 3.6m	● Black	1 x 10	EA502
72288-02	10cm x 3.6m	● Black	1 x 10	EA515
72289-10	5cm x 3.6m	Mixed†	1 x 10	EA490
72289-11	7.5cm x 3.6m	Mixed†	1 x 10	EA665
72289-12	10cm x 3.6m	Mixed†	1 x 10	EA514

To comply to REACH UK guidance, product safety education must be undertaken by the user. To access free training contact: concierge.service@essity.com

†Mixed packs contain two rolls each of dark blue, black, red, purple and pink



1. Petty, A. C., Wardman, C., (1998). A randomized, controlled comparison of adjustable focused rigidity primary casting technique with standard plaster of Paris/synthetic casting technique in the management of fractures and other injuries. Journal of Orthopaedic Nursing. 2. 95 - 102

Non-Fibreglass Cast Tape

Used for primary and secondary casting applications, **Delta-Cast® Elite** has been designed with ease of application and patient comfort in mind. Our patented non-fibreglass casting material combines strength and rigidity with soft edges for patient comfort.

Non-fibreglass

- Provides smooth and soft cast edges for enhanced patient comfort

Highly conformable polyester casting material

- High strength, rigidity and durability
- Easily conforms to body contours without folding or tucking for increased patient comfort
- Smooth finish of the cast reduces potential snag on clothing and irritation of the skin

Consistent set-time

- Sets in approximately three minutes and is fully weight bearing after 20 minutes

Code	Size	Colour	Pack Qty	NHS SC Code
72279-00	5cm x 3.6m roll	○ White	1 x 10	EA385
72279-01	7.5cm x 3.6m roll	○ White	1 x 10	EA386
72279-02	10cm x 3.6m roll	○ White	1 x 10	EA387
72279-03	12.5cm x 3.6m roll	○ White	1 x 10	EA388
72278-00	5cm x 3.6m roll	● Black	1 x 10	EA398
72278-01	7.5cm x 3.6m roll	● Black	1 x 10	EA399
72278-02	10cm x 3.6m roll	● Black	1 x 10	EA400
72276-00	5cm x 3.6m roll	● Dark blue	1 x 10	EA389
72276-01	7.5cm x 3.6m roll	● Dark blue	1 x 10	EA390
72276-02	10cm x 3.6m roll	● Dark blue	1 x 10	EA391
72277-00	5cm x 3.6m roll	● Purple	1 x 10	EA395
72277-01	7.5cm x 3.6m roll	● Purple	1 x 10	EA396
72277-02	10cm x 3.6m roll	● Purple	1 x 10	EA397
72275-00	5cm x 3.6m roll	● Red	1 x 10	EA392
72275-01	7.5cm x 3.6m roll	● Red	1 x 10	EA393
72275-02	10cm x 3.6m roll	● Red	1 x 10	EA394
73455-00	5cm x 3.6m roll	● Pink	1 x 10	EA534
73455-01	7.5cm x 3.6m roll	● Pink	1 x 10	EA535
73455-02	10cm x 3.6m roll	● Pink	1 x 10	EA536
73453-00	5cm x 3.6m roll	● Light blue	1 x 10	EA584
73453-01	7.5cm x 3.6m roll	● Light blue	1 x 10	EA585
73453-02	10cm x 3.6m roll	● Light blue	1 x 10	EA586
73454-00	5cm x 3.6m roll	● Green	1 x 10	EA587
73454-01	7.5cm x 3.6m roll	● Green	1 x 10	EA588
73454-02	10cm x 3.6m roll	● Green	1 x 10	EA589
73456-00	5cm x 3.6m roll	● Orange	1 x 10	EA590
73456-01	7.5cm x 3.6m roll	● Orange	1 x 10	EA591
73456-02	10cm x 3.6m roll	● Orange	1 x 10	EA592

To comply to REACH UK guidance, product safety education must be undertaken by the user. To access free training contact: concierge.service@essity.com



Delta-Cast® Prints

LATEX
FREE
FORMULA

Non-Fibreglass Cast Tape

Delta-Cast® Prints is a range of colourful alternative patterned non-fibreglass cast tapes which give patients a variety of design options for their casts. The colourful designs can also help to overcome the anxiety of young and old patients in cast rooms.

Code	Size	Colour	Pack Qty
72273-22	5cm x 3.6m	Army camouflage	1 x 10
72273-06	7.5cm x 3.6m	Army camouflage	1 x 10
72273-02	5cm x 3.6m	Dinosaur print	1 x 10
72273-07	7.5cm x 3.6m	Pastel print	1 x 10
72273-08	5cm x 3.6m	Football print	1 x 10
72273-09	7.5cm x 3.6m	Football print	1 x 10
72273-05	5cm x 3.6m	Teddy bear print	1 x 10
72273-20	5cm x 3.6m	Paw print	1 x 10
72273-21	7.5cm x 3.6m	Paw print	1 x 10
72273-03	5cm x 3.6m	Winter print	1 x 10
72273-04	7.5cm x 3.6m	Winter print	1 x 10
72273-40	5cm x 3.6m	Pink camouflage	1 x 10
72273-41	7.5cm x 3.6m	Pink camouflage	1 x 10

To comply to REACH UK guidance, product safety education must be undertaken by the user. To access free training contact: concierge.service@essity.com

Colourful printed pattern

- The colourfast playful patterns make wearing a cast more fun and can help increase patient compliance

Highly conformable polyester casting material

- The high conformability supports confident, wrinkle-free, precise application, with even unrolling tension and good end lay down with secure lamination for long-term durability

Reliable and consistent working time

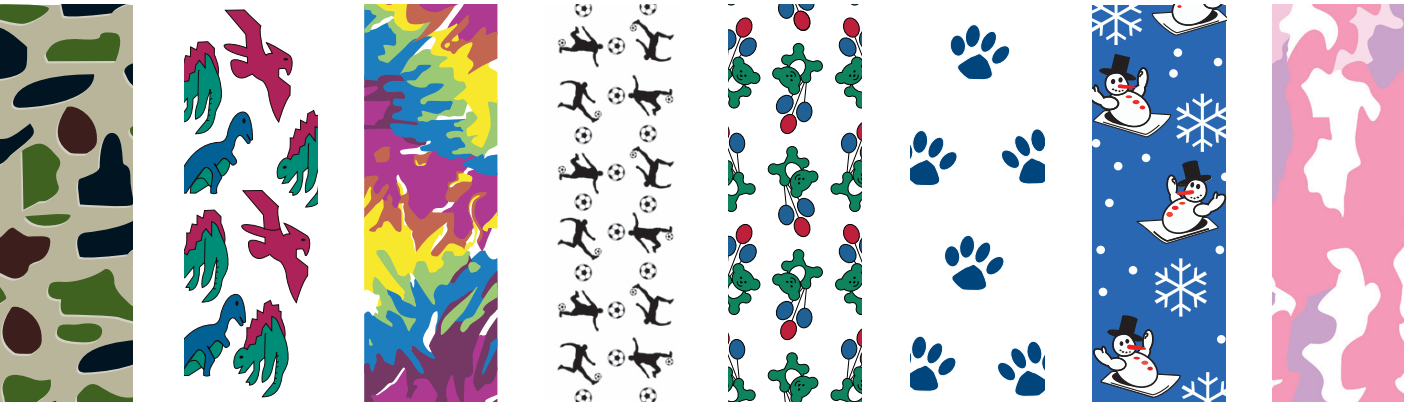
- The reliable and consistent working time window delivers a fully weight bearing cast after approximately 20 minutes

Robust, lightweight, smooth cast

- Rigid yet flexible material helps prevent constriction of muscle and tissue
- The smooth finish of the cast reduces snag on clothing and irritation of the skin

Available in eight patterns

- Providing the patient with a wide variety of choice



Delta-Lite® Plus

LATEX
FREE
FORMULA

Fibreglass Cast Tape

Delta-Lite® Plus is a smooth, durable, fibreglass cast tape that combines a fibreglass substrate and a polyurethane resin system with tack free properties. The tack-free properties allow ease of application and moulding using standard examination gloves.

Smooth finish surface

- Non-abrasive finished cast enhances patient comfort

Excellent rigid support

- Creates a long-lasting, lightweight cast

High lamination

- Gives strength between cast layers
- Improved cast strength

Good conformability

- Makes casting application easier around all body contours
- No special application techniques required

Outstanding moulding

- Provides excellent anatomical support

Code	Size	Colour	Pack Qty	NHS SC Code
73458-00	2.5cm x 1.8m roll	White	1 x 10	EAF435
73458-01	5cm x 3.6m roll	White	1 x 10	EAF443
73458-02	7.5cm x 3.6m roll	White	1 x 10	EAF450
73458-03	10cm x 3.6m roll	White	1 x 10	EAF463
73458-04	12.5cm x 3.6m roll	White	1 x 10	EAF466
73458-55	5cm x 3.6m roll	Pink	1 x 10	EAF440
73458-56	7.5cm x 3.6m roll	Pink	1 x 10	EAF447
73458-57	10cm x 3.6m roll	Pink	1 x 10	EAF457
73458-20	5cm x 3.6m roll	Dark blue	1 x 10	EAF437
73458-21	7.5cm x 3.6m roll	Dark blue	1 x 10	EAF451
73458-22	10cm x 3.6m roll	Dark blue	1 x 10	EAF453
73458-30	5cm x 3.6m roll	Red	1 x 10	EAF442
73458-31	7.5cm x 3.6m roll	Red	1 x 10	EAF449
73458-32	10cm x 3.6m roll	Red	1 x 10	EAF461
73458-60	5cm x 3.6m roll	Purple	1 x 10	EAF441
73458-61	7.5cm x 3.6m roll	Purple	1 x 10	EAF448
73458-62	10cm x 3.6m roll	Purple	1 x 10	EAF459
73458-35	5cm x 3.6m roll	Light blue	1 x 10	EAF438
73458-36	7.5cm x 3.6m roll	Light blue	1 x 10	EAF445
73458-37	10cm x 3.6m roll	Light blue	1 x 10	EAF454
73458-45	5cm x 3.6m roll	Black	1 x 10	EAF436
73458-46	7.5cm x 3.6m roll	Black	1 x 10	EAF444
73458-47	10cm x 3.6m roll	Black	1 x 10	EAF452
73458-25	5cm x 3.6m roll	Green	1 x 10	EAF439
73458-26	7.5cm x 3.6m roll	Green	1 x 10	EAF446
73458-27	10cm x 3.6m roll	Green	1 x 10	EAF455
73458-65	5cm x 3.6m roll	Yellow	1 x 10	EAF531
73458-66	7.5cm x 3.6m roll	Yellow	1 x 10	EAF532
73458-67	10cm x 3.6m roll	Yellow	1 x 10	EAF533
73458-75	5cm x 3.6m roll	Orange	1 x 10	EAF2602
73458-76	7.5cm x 3.6m roll	Orange	1 x 10	EAF2603
73458-77	10cm x 3.6m roll	Orange	1 x 10	EAF2604

To comply to REACH UK guidance, product safety education must be undertaken by the user. To access free training contact: concierge.service@essity.com



Delta-Cast® Soft

Flexible Casting Tape

Delta-Cast® Soft is designed to provide functional support to fractures and soft tissue injuries. It's semi-rigidity allows for flexibility and mobility, helping to reduce immobilisation related problems such as muscle atrophy and joint stiffness. Improved flexibility and mobility can help promote a faster healing process.

Delta-Cast® Soft is constructed using a combination of high-tech polyester, polypropylene, and elastane yarns, together with a specially developed resin. This technology builds safety, functionality and comfort into a product offering all the advantages only a non-fibreglass casting tape can offer.

Code	Size	Colour	Pack Qty	NHS SC Code
72708-02	2.5cm x 1.8m roll	○ White	1 x 10	EAF659
72708-12	5cm x 3.6m roll	○ White	1 x 10	EAF660
72708-22	7.5cm x 3.6m roll	○ White	1 x 10	EAF661
72708-32	10cm x 3.6m roll	○ White	1 x 10	EAF657
72708-42	12.5cm x 3.6m roll	○ White	1 x 10	EAF658
72708-05	5cm x 3.6m roll	● Blue	1 x 10	EAF650
72708-15	7.5cm x 3.6m roll	● Blue	1 x 10	EAF651
72708-25	10cm x 3.6m roll	● Blue	1 x 10	EAF649
72708-08	5cm x 3.6m roll	● Red	1 x 10	EAF655
72708-18	7.5cm x 3.6m roll	● Red	1 x 10	EAF656
72708-28	10cm x 3.6m roll	● Red	1 x 10	EAF654
72708-50	5cm x 3.6m roll	● Pink	1 x 10	EAF663
72708-51	7.5cm x 3.6m roll	● Pink	1 x 10	EAF664
72708-52	10cm x 3.6m roll	● Pink	1 x 10	EAF662
72708-01	5cm x 3.6m roll	● Black	1 x 10	EAF647
72708-11	7.5cm x 3.6m roll	● Black	1 x 10	EAF648
72708-21	10cm x 3.6m roll	● Black	1 x 10	EAF646
72708-09	5cm x 3.6m roll	🐾 Paw print	1 x 10	EAF652
72708-19	7.5cm x 3.6m roll	🐾 Paw print	1 x 10	EAF653
72708-60	5cm x 3.6m roll	❤️ Heart print	1 x 10	EAF668
72708-61	7.5cm x 3.6m roll	❤️ Heart print	1 x 10	EAF669

To comply to REACH UK guidance, product safety education must be undertaken by the user. To access free training contact: concierge.service@essity.com



Three-way stretch / excellent conformability

- Ease of handling on application
- Allows for a consistent fit around difficult body contours with a wrinkle-free application, offering enhanced fit and support for the patient

Non-fibreglass

- Highly durable to maintain cast functionality, helping reduce time and costs for the cast room that can be associated with cast repairs

Range of colours and unique designs

- Available in patented paw print, heart or colour designs, offering patients of all ages a more playful, pleasant cast
- Helps support patient concordance and function

Versatile application

- Designed for both customised removable casts and circular applications, Delta-Cast® Soft can easily be trimmed to shape, producing an optimal fit for the patient
- Can be combined with hook and loop straps for removable applications, or with reinforcement materials for stronger support

100% Radiolucent

- Allows clear X-ray images for diagnosis, offering cost and time savings

Flexibility

- Can help to minimise some negative effects of total rigid immobilisation; muscle atrophy, joint stiffness and other immobilisation related issues
- Improved circulation can help towards a faster healing process and a shorter rehabilitation period

Ease of removal

- Can be removed by lifting and unpeeling
- No cast saw required. Can be removed using regular cast scissors

Excellent lamination

- Excellent lamination of layers and good end lay down produces a strong, well bonded cast



Dynacast® Prelude

Synthetic Splint System

Dynacast® Prelude is an fibreglass splinting system specifically incorporating fibreglass, covered by a polypropylene padding. Stronger and more versatile than traditional plaster of Paris, it is ideal for trauma and post-op applications from acute through to rehabilitation phase.

Strong, light and durable

- Resin coated fibreglass provides a high strength splint which is resistant to breakdown
- Will not breakdown when wet

Quick setting and early weight bearing

- Dynacast® Prelude has an initial set of 3 - 5 minutes and reaches weight bearing strength in approximately 20 minutes

No mess or waste

- With no plaster mess, Dynacast® Prelude is ideally suited to the theatre and ward environment
- The continuous roll format ensures clinicians will only use what is required and provides versatility to choose the length of splint to suit the indication and patient

Patient comfort

- Soft polypropylene padding covers the fibreglass splint minimising the risk of pressure points
- Naturally aids moisture transmission away from the skin to enhance patient comfort

Code	Size	Colour	Pack Qty	NHS SC Code
71418-00	2.5cm x 4.6m roll	White	1 x 1	-
71420-00	5cm x 4.6m roll	White	1 x 1	EAF083
71421-00	7.5cm x 4.6m roll	White	1 x 1	EAF084
71415-00	10cm x 4.6m roll	White	1 x 1	EAF085
71416-00	12.5cm x 4.6m roll	White	1 x 1	EAF086
71417-00	15cm x 4.6m roll	White	1 x 1	EAF087
71419-00	20cm x 2.3m roll	White	1 x 1	EAM1844

To comply to REACH UK guidance, product safety education must be undertaken by the user. To access free training contact: concierge.service@essity.com

ILS (interlocking strength) technology

- Provides strength and durability
- Minimises wrinkles and creases in the finished splint

Dynacast® Prelude Solo

Unpadded Precut Splinting System

The Dynacast® Prelude Solo unpadded precut is a fibreglass splinting system that comes in a variety of widths and lengths, and is stronger and more versatile than traditional plaster of Paris slabs. Dynacast® Prelude Solo splints are easy to apply and clean, and are ideal for treating trauma and post-operative applications.

Fibreglass splint

- Stronger than traditional plaster of Paris slabs
- Reduces weight and bulk to patient

Simple activation with no plaster dust

- Liner enables gloveless application
- No dust and mess associated with traditional plaster of Paris slabs
- Ideal for use in theatre and A&E environments

Slim profile

- Excellent mouldability

ILS (interlocking strength) technology

- Provides strength and durability
- Minimises wrinkles and creases in the finished splint

Code	Size	Colour	Pack Qty	NHS SC Code
72963-00	5cm x 25cm	White	1 x 10	-
72963-01	7.5cm x 30cm	White	1 x 10	EAZ687
72963-02	7.5cm 89cm	White	1 x 10	-
72963-03	10cm x 38cm	White	1 x 10	GRS000
72963-04	10cm x 76cm	White	1 x 10	-
72963-05	12.5cm x 76cm	White	1 x 10	EAF487
72963-06	15cm x 30cm	White	1 x 10	EAF488

To comply to REACH UK guidance, product safety education must be undertaken by the user. To access free training contact: concierge.service@essity.com



Dynacast® Prelude Strap Kits

Acute Synthetic Splint System

Designed for use with **Dynacast® Prelude** splints in the rehabilitation phase, this patient-friendly product enables long-term use without the need for a full bandage, enabling easy splint removal. Each kit contains three latex-free hook and loop straps.

Code	Size	Colour	Pack Qty
71415-18	Upper extremity kit	Red	1 x 10
71415-19	Lower extremity kit	Blue	1 x 10



Dynacast® AS Ankle Splint

Acute Synthetic Splint System

Dynacast® AS Ankle Splint is a custom mouldable solution for external ankle support following acute injury or for chronic joint instability. This is a therapy solution that can be used throughout treatment from acute phase to rehabilitation.

Code	Size	Colour	Pack Qty
71984-00	Paediatric kit	blue	1 x 1
71361-00	Small / medium kit	blue	1 x 1
71360-00	Medium / large kit	Blue	1 x 1
72834-00	Small / medium dispenser pack	Blue	1 x 10
72835-00	Medium / large dispenser pack	Blue	1 x 10

To comply to REACH UK guidance, product safety education must be undertaken by the user. To access free training contact: concierge.service@essity.com

Dispenser pack of 10 splints

- 10 splints and straps
- Improved storage



LATEX
FREE
FORMULA

Low profile

- Allows the use of normal footwear
- Fits easily into training shoes

Custom mouldable splint

- Allows for a precise fit for good patient comfort

Pre-made fibreglass stirrup splint with micro-perforated foam covering

- Ideal for A&E
- Strong, lightweight, breathable yet durable therapy solution

All in one treatment kit from acute to rehabilitation

- Oedema control
- Circumferential support
- Cold therapy in the acute stage
- U-shaped foam inserts

Delta-Xpress®

Alternative Splint System

Delta-Xpress® is a groundbreaking splinting system that allows limb immobilisation in a fraction of the time, compared to conventional splints or casts.

Delta-Xpress® offers four different designs to immobilise lower leg, arm, wrist and finger fractures. The prefabricated design is intuitive to use, while providing secure and precise immobilisation for short-term use.

Precise clinical positioning

- Pre-defined angles hold limb in optimal healing position
- Available in three sizes

Ready to use from the shelf

- Prefabricated design allows instant application
- No activation, no curing, no clean-up
- No need for water activation or even working space
- Instructions and icons support quick and correct application

Secure – safe and strong

- Rigid compound material
- Good conformability for individual fit
- Fixation with bandage or hook and loop straps

High performance design features

- Cushioned - padding inside for comfort and absorption
- Breathability - to help avoid skin maceration
- Size and shape - adjustable with standard scissors
- Convenient - splints come in three sizes with measuring scale and colour code on product
- Easy access to wounds

Delta-Xpress® Wrist and Finger

Wrist and Finger Splint

- Rigid stay for optimal wrist, hand and finger position
- The stay has an angle of 100° to support the flexion of the metacarpophalangeal joint (MCP) and stabilises the wrist in 30° dorsal extension

Code	Size	Pack Qty	NHS SC Code
72713-00	Small	1 x 10	EAZ153
72713-01	Medium	1 x 10	EAZ154
72713-02	Large	1 x 10	EAZ155



Delta-Xpress® Wrist

Wrist Splint

Code	Size	Pack Qty	NHS SC Code
72712-00	Small	1 x 10	EAZ150
72712-01	Medium	1 x 10	EAZ151
72712-02	Large	1 x 10	EAZ152

- Rigid stay for optimal wrist position
- Wrist angle in 30° dorsal extension guarantees a functional therapy position



Delta-Xpress® Lower Leg

Lower Leg Splint

Code	Size	Pack Qty	NHS SC Code
72711-00	Small	1 x 10	-
72711-01	Medium	1 x 10	EAZ148
72711-02	Large	1 x 10	EAZ149

- Pre-adjusted 90° angle for ideal healing position of lower leg
- Ankle and foot rest inlay for optimal foot position
- Malleoli paddings for increased comfort



Delta-Xpress® Elbow

Elbow Splint

Code	Size	Pack Qty	NHS SC Code
72710-00	Small	1 x 10	-
72710-01	Medium	1 x 10	EAZ145
72710-02	Large	1 x 10	EAZ146

- Pre-adjusted 90° angle assures optimal healing position of upper arm, elbow and lower arm



Undercast Padding

Essity offers a wide range of padding options for use in conjunction with both plaster of Paris and synthetic casting tapes.

Soffban® Natural and **Velband®** offer the benefits of a natural padding with excellent absorption, making them both an ideal product for theatre use.

Soffban® Synthetic, **Delta-Rol®** and **Delta-Rol® S** are synthetic materials that are non-absorbent and therefore retain excellent cushioning when wet to give increased patient comfort. Delta-Rol® S also incorporates a super fine foam backing, which removes the need to use separate pre-tape for a smooth finish. **Delta-Dry®** water resistant cast padding has a unique patented technology, which allows patients to shower and bathe as normal when used with synthetic cast tapes.

Soffban® Natural

Natural Viscose Padding

Soffban® Natural padding is suitable for use with both plaster of Paris and synthetic casts to aid comfort.

Code	Size	Pack Qty	NHS SC Code
71472-00	5cm x 2.7m roll	1 x 12	EPA071
71473-00	7.5cm x 2.7m roll	1 x 12	EPA073
71469-00	10cm x 2.7m roll	1 x 12	EPA075
71470-00	15cm x 2.7m roll	1 x 12	EPA077
71471-00	20cm x 2.7m roll	1 x 6	EPA079

Highly absorbent natural viscose

- Suitable for use where bleeding may occur
- Wicks moisture away from the skin
- Reduces the risk of skin maceration and sensitivity

Versatile

- Soffban® Natural is also suitable and widely used for venous leg ulcer multi-layer bandaging therapy as the first layer*



Easy to apply

- Excellent conformability around body contours
- Easy to tear
- Feathers easily and clings to itself
- Blends to give a smooth even finish

Autoclavable

- Can be sterilised
- No need to remove the paper wrapping
- 100% viscose rayon

Soft

- Comfortable for the patient, soft and gentle against the skin

Excellent cushioning

- Padding structure creates a material which is light, deep and stable, with good airflow
- Protects from rigid casting material
- Also provides protection from the cast saw on cast removal



Soffban® Synthetic

Synthetic Padding

Soffban® Synthetic padding is suitable for use with both plaster of Paris and synthetic casts.

Synthetic non-absorbent material

- Wicks moisture away from the skin
- Reduces the risk of skin maceration and sensitivity
- Cushioning 'loft' is retained even if padding becomes wet

Easy to apply

- Excellent conformability around body contours
- Easy to tear
- Feathers easily and clings to itself
- Blends to give a smooth even finish

Excellent cushioning and soft feel

- Padding structure creates a material which is light, deep and stable, with good airflow
- Protects the patient with a reduced risk of skin abrasions
- Also provides protection from the cast saw on cast removal
- Comfortable for the patient, soft and gentle against the skin

Code	Size	Pack Qty	NHS SC Code
71464-01	5cm x 2.7m roll	1 x 12	EPA020
71467-01	7.5cm x 2.7m roll	1 x 12	EPA021
71486-05	10cm x 2.7m roll	1 x 12	EPA022
71465-01	15cm x 2.7m roll	1 x 12	EPA023
71466-01	20cm x 2.7m roll	1 x 6	EPA024

Autoclavable

- Can be sterilised
- No need to remove the paper wrapping



Velband®

Natural Rayon Padding

Velband® padding is a natural rayon fibre padding, highly absorbent, drawing moisture away from the skin. It has a unique three-layer structure and is ideal for use in theatre where absorbent cushioning is required.

Code	Size	Pack Qty	NHS SC Code
72315-00	5cm x 2.75m roll	12 x 12	EPA011
72315-01	7.5cm x 2.75m roll	20 x 12	EPA013
72315-02	10cm x 2.75m roll	16 x 12	EPA015
72315-04	15cm x 2.75m roll	10 x 12	EPA017
72315-06	20cm x 2.75m roll	15 x 6	EPA019
72315-30	10cm x 4.5m roll	7 x 12	EPA014

Unique construction

- Lightweight, breathable non-woven fabric
- The middle natural viscose layer gives excellent absorbent properties and cushioning

Highly absorbent

- Suitable for use where bleeding may occur*
- Absorbs exudate and moisture away from the skin
- Reduces the risk of skin maceration and sensitivity

Excellent cushioning

- Unique three-layer construction provides excellent cushioning for improved patient comfort
- Reduces risk of pressure sores

Autoclavable

- Can be sterilised for theatre use



Delta-Rol®

Synthetic Padding

Delta-Rol® Synthetic padding is a non-absorbent synthetic material, it wicks moisture away from the skin and allows it to evaporate, resulting in a reduced risk of skin maceration. Suitable for use with plaster of Paris and synthetic casts.

Synthetic non-absorbent material

- Wicks moisture away from the skin
- Reduces the risk of skin maceration and sensitivity
- Cushioning 'loft' of the padding is retained even when material becomes wet

Easy to apply

- Good conformability around body contours
- Gives a smooth even finish under the cast

Excellent cushioning and soft feel

- Padding structure creates a material which is light, deep and stable, with good airflow
- Protects the patient with a reduced risk of skin abrasions
- Also provides protection from the cast saw on cast removal
- Comfortable for the patient, soft and gentle against the skin



Code	Size	Pack Qty
72310-00	5cm x 2.75m roll	10 x 12
72310-01	7.5cm x 2.75m roll	24 x 12
72310-02	10cm x 2.75m roll	18 x 12
72310-03	15cm x 2.75m roll	12 x 12
72310-04	20cm x 2.75m roll	18 x 6

Autoclavable

- Can be sterilised
- No need to remove the paper wrapping



*A primary dressing should always be worn over open wounds

Delta-Rol® S

Synthetic Padding

Delta-Rol® S Synthetic is a unique combination of a synthetic undercast padding needled onto a thin polyurethane foam bandage. This exceptional combination delivers excellent conformability and cushioning together with the smooth, even finish associated with the use of a pre-tape over cast padding.

Code	Size	Pack Qty
72322-00	5cm x 2.75m roll	10 x 12
72322-01	7.5cm x 2.75m roll	12 x 12
72322-02	10cm x 2.75m roll	9 x 12
72322-03	15cm x 2.75m roll	6 x 12
72322-04	20cm x 2.75m roll	9 x 6



Non-absorbent material

- Wicks moisture away from the skin
- Reduces the risk of skin maceration and sensitivity
- Cushioning 'loft' of the padding is retained even if material becomes wet

Polyurethane foam lining

- Provides a smooth even finish on which to apply the cast

Easy to apply

- Good conformability around body contours
- Gives a smooth even finish under the cast
- Separate pre-tape not required

Excellent cushioning

- Padding structure creates a material which is light, deep and stable, with good airflow
- Protects the patient with a reduced risk of skin abrasions
- Also provides protection from the cast saw on cast removal

Delta-Dry®

Water Resistant Cast Padding

Delta-Dry® has a patented technology allowing patients to clean and rinse their cast and also bathe and shower as normal. Delta-Dry® is conformable and easy to apply, resulting in a comfortable cast. Ideal for use with incontinent paediatric or elderly and less mobile patients when used with a synthetic cast tape.

Code	Size	Pack Qty	NHS SC Code
73443-00	5cm x 2.4m roll	1 x 12	-
73443-01	7.5cm x 2.4m roll	1 x 12	EPA026
73443-02	10cm x 2.4m roll	1 x 12	EPA027



Water-resistant cast padding

- Allows patients to shower and bathe as normal
- Increases hygiene
- Reduces odour
- Improves patient compliance when wearing a cast

Easy to apply

- Good conformability around body contours
- No special tools are needed for application or removal

How does it work?

- The open knit structure, along with the water-resistant qualities of the fibres, allows the water to drain from the cast
- The majority of the water simply runs out of the cast. The remaining moisture evaporates through the cast, heated by normal body temperature
- Position the cast to allow water to drain from it
- Long arm and leg casts must be positioned as to not allow water to pool in the vicinity of the heel or elbow
- Casts will take 30 minutes to 1 hour approximately to completely dry out

LATEX
FREE
FORMULA

Delta-Dry® Pantaloon

The Hygienic Hip Spica Cast Treatment Solution

Essity continually strives to develop and offer the best solutions that support medical experts in achieving safe and successful treatments. In particular, the care of paediatric patients needs considered development as well as the products used in that treatment. This pre-shaped, soft and water-resistant liner has been developed using the patented Delta-Dry® technology to simplify the treatment of developmental dysplasia of the hip or femur fractures. The aim of the Delta-Dry® Pantaloon is to help support improved patient hygiene and ease of application for both patient and clinician.

Delta-Dry® Pantaloon maintains patient hygiene, as flushing the hip spica cast and even bathing is possible. For best results, only use Delta-Dry® Pantaloon in combination with water-resistant, synthetic cast material.

Delta-Dry technology

Water-resistant liner material that can help to increase patient and parent acceptance and potentially supports time and cost-savings

- Enables bathing and flushing
- Helps to avoid odour, itching and skin maceration
- Can help to allow expanded duration between cast changes (up to six weeks)

Pre-cut shape in three sizes

- Permits an easy application, a suitable fit with little creasing offering high wearing comfort and allowing safe and easy application

Quick dry system

High water vapour permeability for optimised hygienic care

- Dries within 90 minutes
- Helps patient's skin to breathe

Care and protection

Soft, flexible and cushioned for infant skin to offer high wearing comfort

- Protects bony prominences
- Provides safety during cast removal
- Comes with foldable flap and cast ends

X-ray translucency

Code	Size	Measurements	Pack Qty	NHS SC Code
73365-00	1	≤ 9.8" / ≤ 25cm	1	EAF930
73365-02	2	9.8 - 11.6" / 25 - 29.5cm	1	EAF929
73365-03	3	≥ 11.6" / ≥ 29.5cm	1	EAF928





Stockinette - Natural and Synthetic

Providing both natural and synthetic stockinette, Essity offers customers their product of choice. Stockinette can be used with both synthetic and plaster of Paris materials.

Delta-Net® and Jersey Standard are traditional stockinette offering patients protection and comfort.

Delta-Dry® Stockinette and Delta-Dry® Softliner allows the patients to wash their hands, shower or bathe whilst in a cast. Delta Dry can be applied just like standard practice - no new techniques needed



Jersey Standard

Natural Ribbed Stockinette

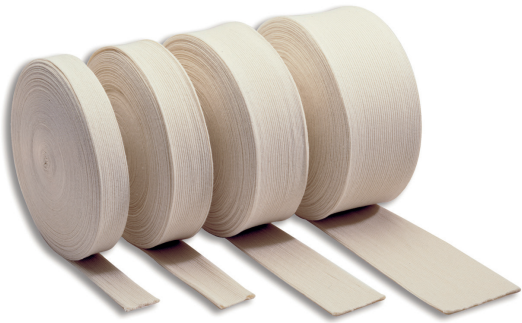
Jersey standard is a natural cotton stockinette. It is suitable for use with synthetic or plaster of Paris casting materials.

Natural cotton

- Soft and gentle to the patients skin with reduced risk of skin irritation

Autoclavable

- Compatible with steam and ethylene oxide sterilisation



Code	Size	Colour	Pack Qty	NHS SC Code
72021-02	3cm x 25m roll	Natural	1 x 1	EGJ137
72021-03	5cm x 25m roll	Natural	1 x 1	EGJ138
72021-04	7cm x 25m roll	Natural	1 x 1	EGJ139
72021-05	10cm x 25m roll	Natural	1 x 1	EGJ140
72021-07	15cm x 25m roll	Natural	1 x 1	EGJ141
72021-08	20cm x 25m roll	Natural	1 x 1	EGJ142
72021-10	25cm x 25m roll	Natural	1 x 1	EGJ143

Delta Terry-Net® C

Natural Terry Cloth Stockinette

Delta Terry-Net® C is a cotton towelling stockinette that can be used underneath either synthetic or plaster of Paris casting materials where extra cushioning and protection required for the patient.

Code	Size	Colour	Pack Qty
72305-00	5cm x 13.7m	Natural	1 x 1
72305-01	7.5cm x 13.7m	Natural	1 x 1
72305-02	10cm x 13.7m	Natural	1 x 1
72305-03	12.5cm x 13.7m	Natural	1 x 1
72305-04	15cm x 13.7m	Natural	1 x 1

Natural cotton

- Soft and gentle to the patient's skin with reduced risk of skin irritation

Versatile

- The cotton towelling cast liner is ideal when used in conjunction with Focused Rigidity Casting (FRC) techniques

Easy to use dispenser

- Easily cut to length as required
- Easy storage and handling

Autoclavable

- Compatible with steam and ethylene sterilisation



Delta-Net® Stockinette



Synthetic Stockinette

Delta-Net® is a soft, comfortable, knitted, synthetic stockinette suitable for use with synthetic or plaster of Paris materials

Code	Size	Colour	Pack Qty	NHS SC Code
72307-05	2.5cm x 22.8m	White	1 x 1	EGJ207
72307-00	5.1cm x 22.8m	White	1 x 1	EGJ204
72307-01	7.6cm x 22.8m	White	1 x 1	EGJ205
72307-02	10.1cm x 22.8m	White	1 x 1	EGJ206
72723-00	2.5cm x 22.8m	Black	1 x 1	-
72723-01	5.1cm x 22.8m	Black	1 x 1	-
72723-02	7.6cm x 22.8m	Black	1 x 1	-
72723-03	10.1cm x 22.8m	Black	1 x 1	-

Synthetic material

- Stretches readily and easily conforms to body contours

Soft, comfortable knit

- To protect the patient's skin under casting materials

Easy to use dispenser

- Easily cut to length as required
- Easy storage and handling



Delta Terry-Net® S



Synthetic Terry Cloth Stockinette

Delta Terry-Net® S is a synthetic towelling stockinette that can be used underneath either synthetic or plaster of Paris casting materials where extra patient comfort is required.

Code	Size	Colour	Pack Qty
72306-00	5cm x 13.7m	White	1 x 1
72306-01	7.5cm x 13.7m	White	1 x 1
72306-02	10cm x 13.7m	White	1 x 1
72306-03	12.5cm x 13.7m	White	1 x 1

Terry knit design

- Provides increased cushioning and protection for the patient

Versatile

- Can be used in conjunction with Focused Rigidity Casting (FRC) techniques

Easy to use dispenser

- Easily cut to length as required
- Easy storage and handling



Delta Terry-Net® Thumb Spica



Thumb Spica Cast Synthetic Liner

Delta Terry-Net® cast liner is designed for use underneath scaphoid casts and other hand related injuries where extra patient comfort is required.

Code	Size	Colour	Pack Qty
72308-02	Short arm - 5cm	White	1 x 1
72308-03	Long arm - 5cm	White	1 x 1
72308-00	Short arm - 7cm	White	1 x 1
72308-01	Long arm - 7cm	White	1 x 1

Terry knit design

- Provides increased cushioning and protection for the patient

Integrated thumb piece

- Allows for quick and simple application

Available in two arm lengths

- Fits a variety of patient sizes



Delta-Dry®

Water-Resistant Stockinette and Softliner

Innovative and simple product solution to support your patients' increased hygiene needs.

Synthetic casts made using **Delta-Dry** Stockinette and Softliner allow patients to wash their hands, shower or bathe whilst wearing their cast. Our synthetic water-resistant casts are also safe to use with both alcohol and water-based hand sanitisers to importantly maintain hand hygiene for those with upper limb immobilisation.

- Standard casting application: Delta-Dry can be applied just like standard Stockinette - no new techniques needed

Water-Resistant with Quick-Dry System

- The patented Delta-Dry material offers water-resistance
- The open knit structure of the fibres accelerate drainage after submerging in water
- The patient's body temperature evaporates residual moisture quickly through the airy mesh. This helps the cast and skin dry quickly, skin feels dry in about 90 minutes after daily hygiene

Boost Hygiene and Patient Comfort

- The polypropylene-nylon-polyester mesh of Delta-Dry products provides a soft, comfortable cushion on the patient's skin
- High breathability keeps skin dry and well aerated helping to reduce skin problems such as maceration, itching and odour
- Patients can also use with both alcohol and water-based hand sanitisers as needed, without compromising the integrity of the cast
- Helping to improve patient compliance and satisfaction

Apply Delta-Dry Using Standard Casting Techniques

- Delta-Dry products are applied the same way as conventional undercast products
- There is no need to learn new application techniques or undergo special training
- The highly conformable and stretchable material makes wrinkle-free application easily and quickly achievable
- Delta-Dry can be removed using standard removal equipment

Code	Size	Pack Qty
Delta-Dry Stockinette - Water Resistant Stockinette		
74564-00	2.5cm x 10m	1 x 1
74564-01	5.1cm x 10m	1 x 1
74564-02	7.6cm x 10m	1 x 1
74564-03	10.1cm x 10m	1 x 1
74564-04	12.5cm x 10m	1 x 1
Delta-Dry Softliner - Water Resistant Softliner		
72779-01	2.5cm x 10m	1 x 1
72779-02	5.1cm x 10m	1 x 1
72779-03	7.6cm x 10m	1 x 1
72779-04	10.1cm x 10m	1 x 1
72779-05	12.5cm x 10m	1 x 1



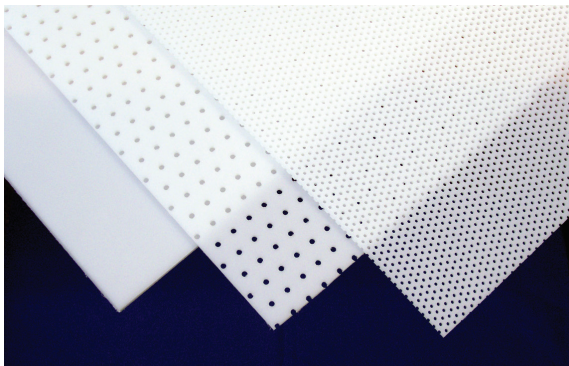


Delta Thermo®

Elastic Memory Thermoplastic

Delta Thermo® is ideally suited for serial splinting and splints for both the upper and lower limbs.

Code	Size	Pack Qty
72312-06	1.6mm thick non-perf, 60cm x 45cm	1 x 2 sheets
72312-08	2.4mm thick non-perf, 60cm x 45cm	1 x 2 sheets
72312-10	3.2mm thick non-perf, 60cm x 45cm	1 x 2 sheets
72312-07	1.6mm thick perf, 60cm x 45cm	1 x 2 sheets
72312-09	2.4mm thick perf, 60cm x 45cm	1 x 2 sheets
72312-11	3.2mm thick perf, 60cm x 45cm	1 x 2 sheets



Elastic memory

- Ensures ability to return to its original sheet form
- Easily remouldable
- Suitable for serial splinting

Translucent appearance on reaching activation temperature

- Allows for precise positioning of the material on the area to be covered
- Prevents accidental self-bonding after heating

Self-finishing edges

Added patient comfort

Activation

- Heating time 1 - 2 minutes at a temperature of 60 - 70°C/140 - 158°F
- Working time 3 - 4 minutes

Thermoplastics

Delta Thermo® with its elastic memory, ensures the ability to return to its original sheet form and is ideally suited for serial splinting.



Casting Accessories

Essity offers a comprehensive range of accessories to complete the fracture management product range.

Adhesive and non-adhesive versions of **Tensoplast® Skin Traction Kits** are suitable for use with a variety of traction methods, and Essity also offer a range of cast shoes to provide essential protection for any cast.

Tensoban®

Pre-Tape Underwrap

Tensoban® is a very thin, polyurethane wrap, which can be used under adhesive bandages and tapes to protect the skin in taping and strapping techniques.

It can also be used as a pre-tape, applied on top of the padding layer in orthopaedic casting, to provide a smooth, compressed surface before the synthetic casting material is applied.

Code	Size	Colour	Pack Qty	NHS SC Code
71500-08	7cm x 20m roll	White	1 x 12	EAZ026



Thin polyurethane pre-tape

- Results in a smooth, compressed surface on which to apply synthetic casting material

Porous and water resistant

- Allows the skin to breathe
- Reduces the risk of skin maceration

Versatile

- Particularly useful when creating 'windows' for inspection and for easy conversion of casts into resting splints



Tensoplast® Sport

Cast Edge Tape

Tensoplast® Sport elastic edge tape with tramline adhesive provides soft edging to casts and splints, and is particularly useful for edging removable casts. The central, high-stretch section makes it easy to fold over cast edges.

Code	Size	Colour	Pack Qty	NHS SC Code
71548-00	3cm x 2.5m roll	White	1 x 1	EAZ027



Tramline adhesive

- Cleanly and easily adheres to casting materials and thermoplastics

Soft finish

- For increased patient comfort

Central high stretch section

- Easy to manoeuvre over the edge of the cast for a smooth, neat finish



Delta Terry-Net® Adhesive Felt Liner



Undercast Cushioning

Delta Terry-Net® Adhesive Felt Liner is a sheet of 2mm semi-compressed felt, used when additional patient comfort is required. The felt is ideal for providing protection to any bony prominences under a cast.

Code	Size	Colour	Pack Qty	NHS SC Code
72295-05	58cm x 100cm	White	1 x 1	GQB414

High quality adhesive backing

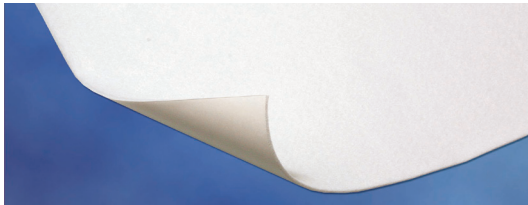
- Secures felt where you require it

Soft finish

- For improved patient comfort

Sheet format

- Can be cut to the desired size and shape as required



Delta Terry-Net® Terry Cloth and Foam Liner



Undercast Cushioning

Delta Terry-Net® Terry Cloth and Foam Liner is a felt layer with foam sheet, which provides additional protection and cushioning for casting and bandaging techniques.

Code	Size	Colour	Pack Qty
72295-06	58cm x 100cm	White	1 x 1

Soft finish

- For improved patient comfort

Sheet format

- Can be cut to the desired size and shape as required



Delta Terry-Net® Adhesive Fleece Edger



Cast Edging Fleece

Code	Size	Pack Qty	NHS SC Code
72995-07	3cm x 13.5m roll	1 x 1	EAZ071

Delta Terry-Net® Adhesive Fleece Edger provides a soft, padded edging to casts and splints and is particularly useful for edging removable casts.

High stretch

- Makes it easy to pad around corners and contours resulting in a neater, more comfortable cast for the patient

High quality adhesive backing

- Secures fleece edger where you require it

Soft finish

- For improved patient comfort



Delta-Net® Adhesive Hook and Stretch Loop



Closure System

Delta-Net® Adhesive Hook and Stretch Loop is an easy to use product, particularly suited for removable casting techniques.

Code	Size	Pack Qty	NHS SC Code
72295-00	Hook fabric 2.5cm x 9.1m	1 x 1	EAZ100
72295-02	Hook fabric 5cm x 9.1m	1 x 1	EAZ1384
72295-01	Stretch loop 2.5cm x 13.7m	1 x 1	EAZ101
72295-03	Stretch loop 5cm x 13.7m	1 x 1	EAZ1346

High quality adhesive

- Readily adheres to casting materials and thermoplastics

Soft edge stretch loop fabric

- Provides increased patient comfort

Available in two widths

- Accommodates various casting requirements

Easy to use dispenser

- Easily cut to length
- Easy storage and handling



Vinyl Cast Shoes

Solo® is a versatile, hard-wearing cast shoe featuring an innovative rocker design and a longitudinally embedded steel strip for greater rigidity. The Solo® vinyl cast shoe has a textured upper surface and large heel cup to prevent movement.

Rocker sole design

- Allows a natural walking gait
- Limits hip problems during long- term immobilisation

Cross-strap method

- Easy touch and close fastening
- Large heel cup to prevent movement on cast

Colour coded straps according to size

- Easy recognition of required size

Universal left / right

- Reduced stock holding required



Code	Size	Colour	Pack Qty	NHS SC Code
72298-40	X Small (With Straps)	-	1 x 10	CVL151
72298-41	Small (With Straps)	-	1 x 10	CVL152
72298-42	Medium (With Straps)	-	1 x 10	CVL153
72298-43	Large (With Straps)	-	1 x 10	CVL154
72298-44	X Large (With Straps)	-	1 x 10	CVL155

Cast Shoes

The **Eco Canvas Cast Sandal** is constructed with only quality materials, using the highest manufacturing standards, yet at an economical price. The non-slip, tri-level, ribbed, rocker sole provides shock absorption and assists normal smooth walking gait. The three hook and loop closure straps ensure a secure fit.

Tri-level ribbed rocker sole

- Provides shock absorption and assists smooth normal walking gait

High level of durability

- Constructed with heavy canvas upper

Secure fit

- Three hook and loop closure straps ensure a good fit

Universal left and right

- Reduced stock holding required



Code	Size	Colour	Pack Qty	NHS SC Code
71427-23	XX small (16cm)	Blue canvas	1 x 1	-
71427-24	X small (19cm)	Blue canvas	1 x 1	CVL026
71427-25	Adult small (21cm)	Blue canvas	1 x 1	CVL025
71427-26	Adult medium (25cm)	Blue canvas	1 x 1	CVL024
71427-27	Adult large (29cm)	Blue canvas	1 x 1	CVL023
71427-28	Adult X large (31cm)	Blue canvas	1 x 1	CVL098

Cast and Bandage Shoe

Solo® is a versatile, hard-wearing cast shoe featuring an innovative rocker design and a longitudinally embedded steel strip for greater rigidity. The Solo® vinyl cast shoe has a textured upper surface and large heel cup to prevent movement. Soles and straps can be provided separately.

Properties

- This cast shoe is composed of neoprene (nylon, EVA and PVC), a thin, thermoplastic rubber outsole and an EVA/ polywood insole
- The specially developed sole ensures a good transition, offers comfort while walking, prevents slipping and is shock-absorbing
- The reinforced heel offers extra support
- Conforms well around cast
- Easy to apply and remove the hook and loop closures
- Large range of sizing including peadiatrics
- Universal design
- Issued in single units

Applications

- For the use in conjunction with lower limb Plaster of Paris and Synthetic casts
- Also suitable to be used with a bandage limb

Code	Size	Shoe size	Pack Qty
45564-00	Artistep S Cast shoe PS	21 - 22	1 x 1
45564-01	Artistep S Cast shoe PM	23 - 27	1 x 1
45564-02	Artistep S Cast shoe P	25 - 30	1 x 1
45565-00	Artistep S Cast shoe XS	31 - 34	1 x 1
45566-00	Artistep S Cast shoe S	35 - 38	1 x 1
45567-00	Artistep S Cast shoe M	39 - 41	1 x 1
45568-00	Artistep S Cast shoe L	42 - 43	1 x 1
45569-00	Artistep S Cast shoe XL	44 - 47	1 x 1



Tensoplast® STK

Skin Traction Kits

Tensoplast® STK is a ready to use kit, including all items needed for the secure application of sustained traction weight support, and suitable for use with a variety of traction methods.

Tensoplast® STK is available in an adhesive and non-adhesive version.

Code	Size	Pack Qty	NHS SC Code
71544-00	Adhesive: adult	1 x 12	ESB151
71554-00	Adhesive: child	1 x 12	ESB153
71555-00	Non-adhesive: adult	1 x 12	ESC051
71556-00	Non-adhesive: child	1 x 12	ESC805



Adhesive version

- Clear, low-allergy, pressure-sensitive adhesive for secure, reliable adhesion to the limb

Non-adhesive version

- Foam skin contact layer, breathable and suitable for tender skin

Padded foot plates

- Comfortable support of the foot

Conformable elastic bandage

- Ease of application to give secure positioning

LATEX
FREE
FORMULA

Knee Rest

Used for Lower Limb Casting Applications

Padded support to hold the knee at an angle of 10-15°, assisting in maintaining the foot in the correct position

Code	Size	Pack Qty
73093-00	One size	1 x 1



Padded surface

- Gives comfort to the patient during casting application

Wipe Clean

- Help maintain infection control between patients

Order through customer services using
Orders.uk@essity.com



Delta-Cast®,
an Essity brand



Essity
T/A BSN medical Limited
PO Box 258 • Willerby • Hull • HU10 6WT

www.medical.essity.co.uk
Tel: 01482 670100 • Fax: 01482 670111
E-mail: orders.uk@essity.com