

**JOBST**®



## **JOBST® UlcerCARE™**

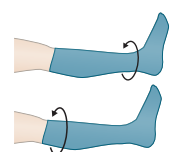
2-in-1 compression system for the effective  
management of venous leg ulcers



## JOBST® UlcerCARE™ is available in **seven sizes**

The JOBST® UlcerCARE™ sizing table covers seven sizes and fits almost every patient. When ordering a JOBST® UlcerCARE™ compression system for a specific patient, make sure to check and compare your measurement to the sizing table.

| Size         | S          | M          | L          | XL         | 2XL        | 3XL        | 4XL        |
|--------------|------------|------------|------------|------------|------------|------------|------------|
| <b>Ankle</b> | 18 - 21 cm | 21 - 24 cm | 24 - 27 cm | 27 - 30 cm | 30 - 33 cm | 33 - 36 cm | 36 - 39 cm |
| <b>Calf</b>  | 29 - 35 cm | 34 - 41 cm | 40 - 47 cm | 46 - 54 cm | 48 - 56 cm | 50 - 58 cm | 52 - 60 cm |







## The innovative 2-in-1 compression system for the **management of venous leg ulcers**

JOBST® UlcerCARE™ enables effective management of a venous leg ulcer while offering ease of use at the same time.

### Features and benefits:

- ✓ Provides nominal compression of 40 mmHg<sup>4</sup> to reach the recommended pressure for the healing of venous leg ulcers<sup>5</sup>
- ✓ Delivers a high stiffness factor to provide effective compression
- ✓ Is a 2-in-1 system for easy handling by patients or clinicians
- ✓ Contains silk in the liner for ease of donning
- ✓ Only two measurements required
- ✓ Easy to find correct patient size
- ✓ Now comes in seven sizes to fit a wide variety of leg shapes
- ✓ Compatible with common footwear and clothing to enable a normal lifestyle
- ✓ Latex free

The special design of the outer stocking's pattern provides more friction to the liner, enhancing the system's stiffness.

## JOBST® UlcerCARE™ **custom-fit**

### Features and benefits:

- ✓ Custom-fit
  - Ensures precise fit and optimal compression regardless of the patients leg shape and size
- ✓ Easy-to-use
  - Facilitates high patient concordance
- ✓ Straight and slant open toe style options
  - Lateral and medial zipper positions allows for ease of donning
- ✓ Available in two colours (liner and outer stocking)
  - Black or caramel

## JOBST® UlcerCARE™ Liner



- ✓ **Provides mild compression for non-mobile patients** to help manage lower leg oedema during bed rest
- ✓ **May be worn 24 hours a day** to hold a wound dressing in place
- ✓ **Has integrated heel and toe** which increases wearing comfort
- ✓ **Contains silk** to promote healthy skin and facilitate donning
- ✓ **Washable at 60°C** for hygienic re-use
- ✓ **Latex free**

## JOBST® UlcerCARE™ Outer Stocking



- ✓ **Designed for patient's self-management** to facilitate easy changing of wound dressing and to allow for improved personal hygiene, e.g. bathing
- ✓ **Shows low friction on the liner** making it easy to don
- ✓ **Has integrated heel and open toe** for high wearing comfort
- ✓ **Washable at 40°C** for hygienic re-use
- ✓ **Available in beige and black** to fit a large variety of clothing styles
- ✓ **Latex free**



- The zippered version additionally
- ✓ **Has an improved zipper** for easy donning
  - ✓ **Is available with zipper** on left or right side for comfortable closure on the opposite side of the wound
  - ✓ **Has an improved locking mechanism** to keep the closed zipper in place
  - ✓ **Latex free**

# Understanding **venous leg ulcers**

Compression can be considered the cornerstone in the therapy of venous leg ulcers. As indicated by numerous studies<sup>1</sup>, adequate compression supports venous flow and shows significant effects on deep venous haemodynamics - ultimately providing large improvements in pain, mobility and quality of life for the patient.

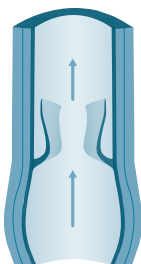
## How do venous leg ulcers develop?

Chronic venous insufficiency is the underlying cause of a venous leg ulcer. The compromised blood flow to the heart is mainly caused by venous valve incompetence. The resulting reflux leads to an ambulatory venous hypertension which damages the capillaries making them more permeable. This allows fluid, proteins and blood cells to leak into the tissues. As a consequence, an adequate support of nutrients and oxygen to the skin is reduced, causing death of skin tissue and the development of a venous leg ulcer.

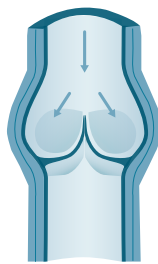


80% of lower extremity ulcerations are venous ulcers.<sup>2</sup>

## Regular function of venous valves

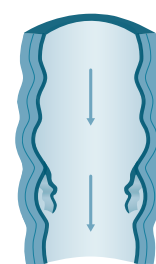


Open valve:  
Blood can flow towards the heart.



Closed valve:  
Blood cannot flow back towards distal.

## Malfunction of venous valves



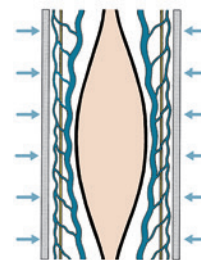
Deficient valve allows the venous blood to reflux.

## Compression and stiffness factor:

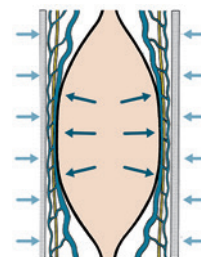
Adequate compression is necessary when venous flow is impaired. As venous valves are compromised, a sustained compression at the ankle of 40 mmHg<sup>3</sup> or more is the recommended pressure to support venous return.

At this point, the specific stiffness of a compression garment becomes a crucial factor. The higher the stiffness, the higher the working pressure and the effect of the muscle pump.

Compression provides the best conditions to heal the ulcer: the subsequent reduction of the local blood volume leads to lower venous reflux and the reduction of ambulatory venous hypertension.



The pressure, exerted onto the body from the outside with the muscles at rest, is called "resting pressure".



"Working pressure" is exerted temporarily onto the body as the muscles are working and the diameter of the body part increases.

# JOBST® UlcerCARE™

## Ready-to-Wear

- ✓ Easy-to-use - only two measurements required
- ✓ Available in seven sizes
- ✓ Outer stocking available in beige or black
- ✓ Non-zippered or zippered outer stocking (zipper can be placed left or right)
- ✓ Liners available in white as standard

| Non-zippered stocking and liners |                             |                                 |          |
|----------------------------------|-----------------------------|---------------------------------|----------|
| Order Code                       | Size - Beige                | Pack Contents stocking / liners | PIP Code |
| 73630-21                         | S                           | 1 / 2                           | 364-4622 |
| 73630-22                         | M                           | 1 / 2                           | 364-4614 |
| 73630-23                         | L                           | 1 / 2                           | 364-4606 |
| 73630-24                         | XL                          | 1 / 2                           | 364-4598 |
| 73630-25                         | 2XL                         | 1 / 2                           | 364-4580 |
| 73630-26                         | 3XL                         | 1 / 2                           | 364-4572 |
| 73630-27                         | 4XL                         | 1 / 2                           | 364-4564 |
| Order Code                       | Size - Black                | Pack Contents stocking / liners | PIP Code |
| 73630-41                         | S                           | 1 / 2                           | 364-4556 |
| 73630-42                         | M                           | 1 / 2                           | 364-4549 |
| 73630-43                         | L                           | 1 / 2                           | 364-4531 |
| 73630-44                         | XL                          | 1 / 2                           | 364-4523 |
| 73630-45                         | 2XL                         | 1 / 2                           | 364-4515 |
| 73630-46                         | 3XL                         | 1 / 2                           | 364-4507 |
| 73630-47                         | 4XL                         | 1 / 2                           | 364-4499 |
| Zippered stocking and liners     |                             |                                 |          |
| Order Code                       | Size - Beige (zipper left)  | Pack Contents stocking / liners | PIP Code |
| 73631-21                         | S                           | 1 / 2                           | 364-1271 |
| 73631-22                         | M                           | 1 / 2                           | 364-1255 |
| 73631-23                         | L                           | 1 / 2                           | 364-1230 |
| 73631-24                         | XL                          | 1 / 2                           | 364-1214 |
| 73631-25                         | 2XL                         | 1 / 2                           | 364-1180 |
| 73631-26                         | 3XL                         | 1 / 2                           | 364-1164 |
| 73631-27                         | 4XL                         | 1 / 2                           | 364-1149 |
| Order Code                       | Size - Beige (zipper right) | Pack Contents stocking / liners | PIP Code |
| 73631-61                         | S                           | 1 / 2                           | 364-1412 |
| 73631-62                         | M                           | 1 / 2                           | 364-1396 |
| 73631-63                         | L                           | 1 / 2                           | 364-1370 |
| 73631-64                         | XL                          | 1 / 2                           | 364-1354 |
| 73631-65                         | 2XL                         | 1 / 2                           | 364-1339 |
| 73631-66                         | 3XL                         | 1 / 2                           | 364-1313 |
| 73631-67                         | 4XL                         | 1 / 2                           | 364-1297 |
| Order Code                       | Size - Black (zipper left)  | Pack Contents stocking / liners | PIP Code |
| 73631-41                         | S                           | 1 / 2                           | 364-1263 |
| 73631-42                         | M                           | 1 / 2                           | 364-1248 |
| 73631-43                         | L                           | 1 / 2                           | 364-1222 |
| 73631-44                         | XL                          | 1 / 2                           | 364-1206 |
| 73631-45                         | 2XL                         | 1 / 2                           | 364-1172 |
| 73631-46                         | 3XL                         | 1 / 2                           | 364-1156 |
| 73631-47                         | 4XL                         | 1 / 2                           | 364-1131 |
| Order Code                       | Size - Black (zipper right) | Pack Contents stocking / liners | PIP Code |
| 73631-71                         | S                           | 1 / 2                           | 364-1404 |
| 73631-72                         | M                           | 1 / 2                           | 364-1388 |
| 73631-73                         | L                           | 1 / 2                           | 364-1362 |
| 73631-74                         | XL                          | 1 / 2                           | 364-1347 |
| 73631-75                         | 2XL                         | 1 / 2                           | 364-1321 |
| 73631-76                         | 3XL                         | 1 / 2                           | 364-1305 |
| 73631-77                         | 4XL                         | 1 / 2                           | 364-1289 |

# JOBST® UlcerCARE™

## Replacement Liners

- ✓ Provides nominal compression of 15-20mmHg\* for non-ambulatory patients
- ✓ Can be worn for 24 hours per day
- ✓ Contains silk to hold dressings in place and for ease of donning

| Order Code | Size | Pack Contents | PIP Code |
|------------|------|---------------|----------|
| 73632-21   | S    | 3             | 364-7666 |
| 73632-22   | M    | 3             | 364-7674 |
| 73632-23   | L    | 3             | 364-7682 |
| 73632-24   | XL   | 3             | 364-7708 |
| 73632-25   | 2XL  | 3             | 364-1123 |
| 73632-26   | 3XL  | 3             | 364-1115 |
| 73632-27   | 4XL  | 3             | 364-1107 |

# JOBST® UlcerCARE™

## Custom-Fit

- ✓ Individual fit for all leg shapes and sizes
- ✓ Straight and slant toe options on outer stocking
- ✓ Lateral and medial zipper positions
- ✓ Liner and outer stocking both available in caramel or black

| Pack Contents    | Code     |
|------------------|----------|
| Outer stocking   | LZ-07-04 |
| Pack of 2 liners | LL-07-04 |

\*The nominal compression for an average ankle size

1. EWMA position document, "Understanding compression therapy", 2003.
2. O'Meara S, Al-Kurdi D, Ovington LG. Antibiotics and antiseptics for venous leg ulcers. Cochrane Database Syst Rev. 2008;(1):CD003557.
3. Targeted nominal compression for an average ankle size.
4. Targeted nominal compression for an average ankle size.
5. EWMA position document, "Understanding compression therapy", 2003.



JOBST®,  
an Essity brand



4295/219

Essity  
T/A BSN medical Limited  
PO Box 258 • Willerby • Hull • HU10 6WT

www.bsnmedical.co.uk  
Tel: 01482 670100 • Fax: 01482 670111  
E-mail: compression.uk@essity.com



@JOBSTUK