

# Antimicrobial Stewardship

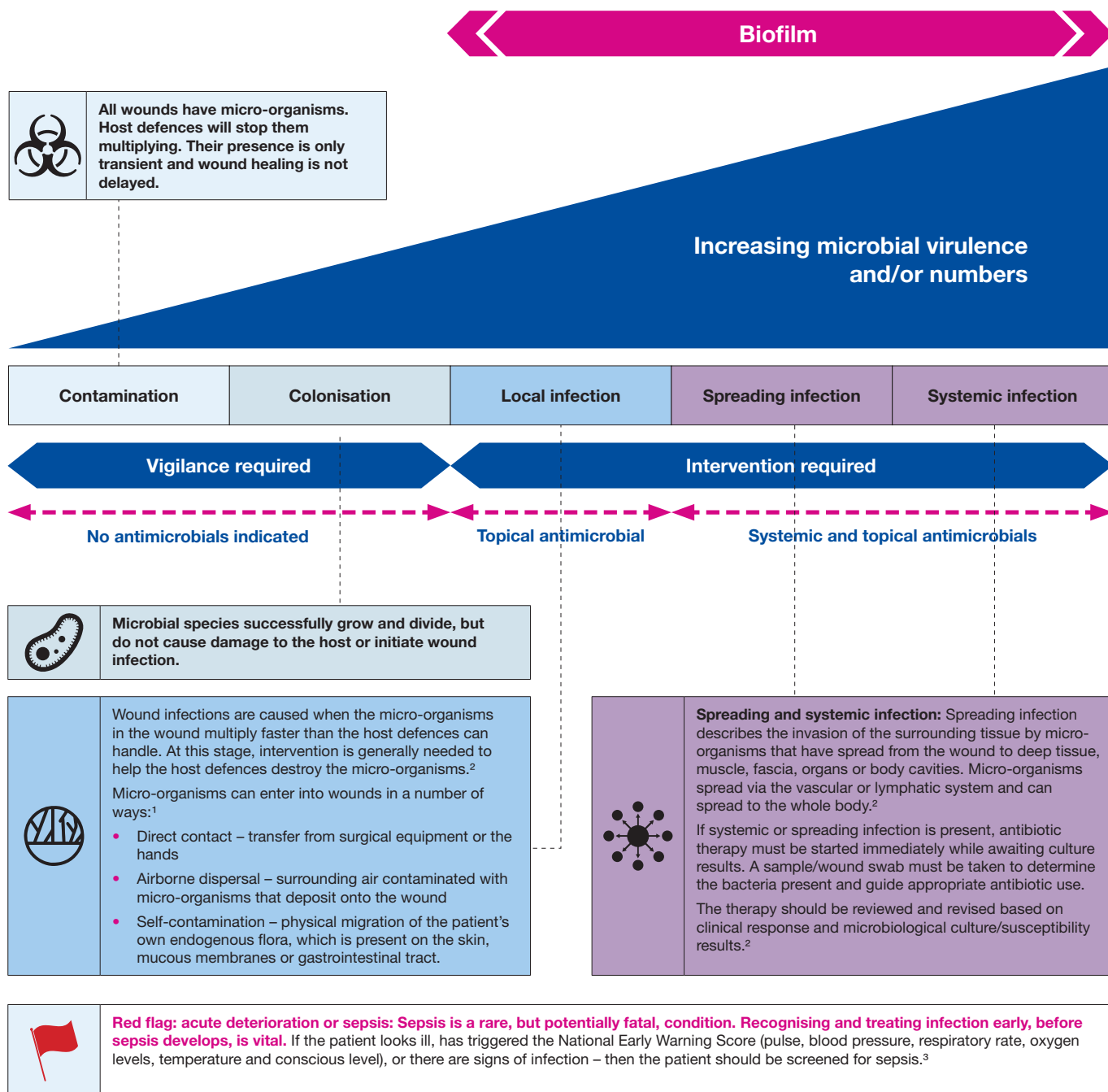
Antimicrobial stewardship strategies  
for wound management



## Understanding the importance of the infection continuum

Clinicians caring for patients with, or at risk of, wounds need to be able to recognise the signs and symptoms of wound infection.<sup>1</sup>

The infection continuum describes the relationship between increasing microbial virulence and the clinical response invoked within the patient. This factsheet will help you understand the stages of the infection continuum and the signs/symptoms to look out for, and provides a pathway to guide management of patients with wounds with or without infection risk considering the principles of antimicrobial stewardship.

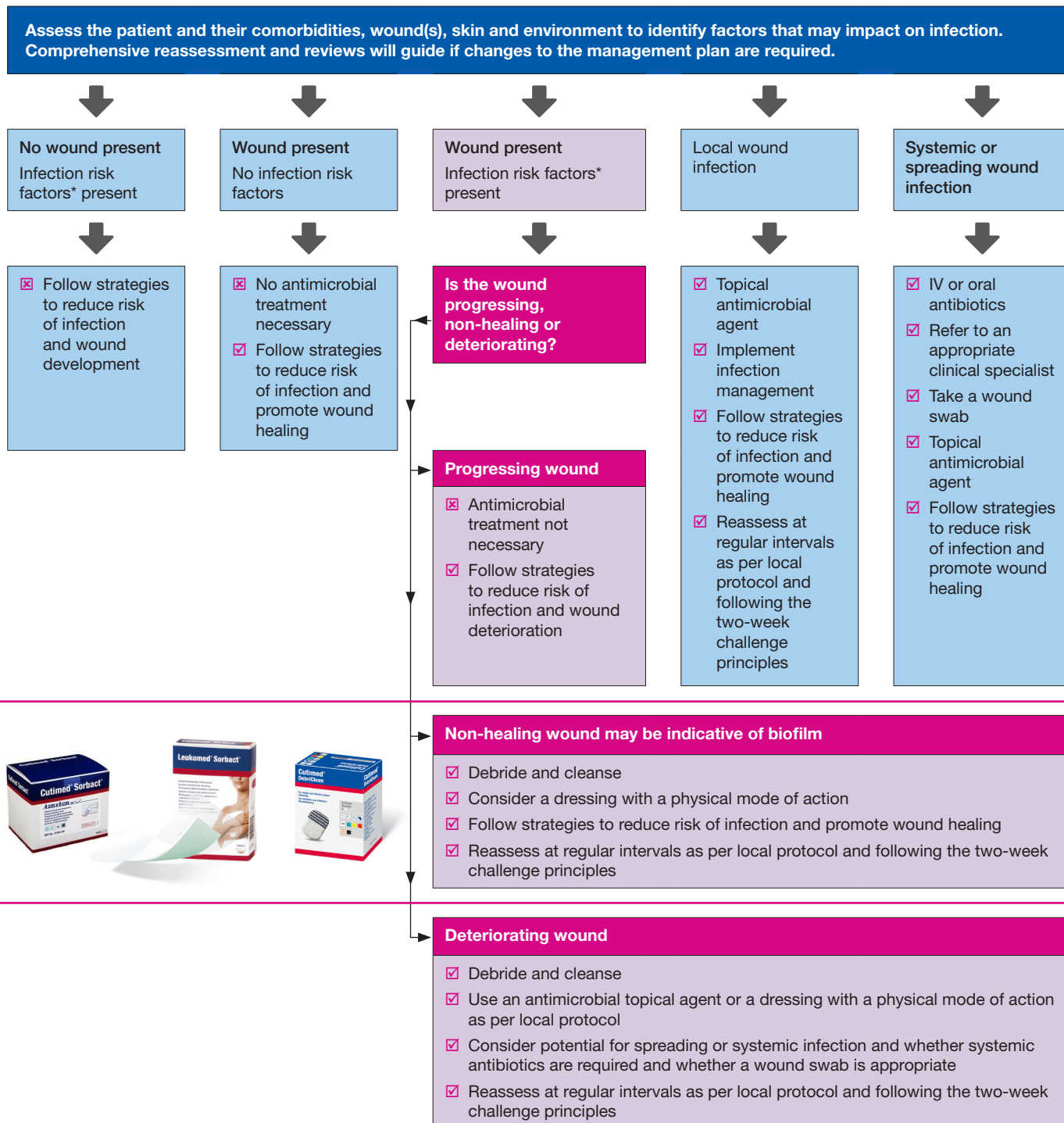


1. Wounds UK (2020) Best Practice Statement: Antimicrobial stewardship strategies for wound management. Wounds UK, London.

2. International Wound Infection Institute (IWII) Wound Infection in Clinical Practice Wound International 2016

3. Royal College of physicians (2017) [Working report](#)

# Pathway to guide management of patients, considering the principles of antimicrobial stewardship<sup>1</sup>



\*Factors associated with increased risk of wound infection include diabetes, emergency procedures, smoking, severe obesity, altered immune function, malnutrition, low body temperature, and long operation times.